



TECHNICAL
INSTALLATION
MAJUBA

APPROVAL

	NAME	SIGNATURE	POSITION	DATE
PREPARED BY:				
REVIEWERD BY:				
APPROVED BY:				

1.1. TECHNICAL INFORMATION

1.1.1. Power data

RATED POWER	25 – 200W
INPUT VOLTAGE RANGE	200 – 240 VAC 50/60Hz
INPUT TYPE (AC/DC)	AC – Alternating current
CONNECTED POWER	22 – 185W
POWER FACTOR	>0.9

1.1.2. LED data

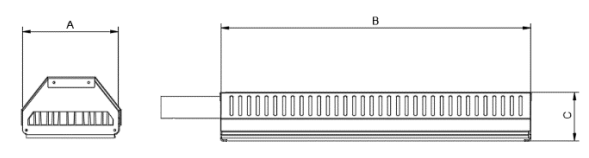
LED BARND	CREE®, Luxeon® or Osram®
CCT	3000 – 5000 Kelvin
CRI	≥80
LED RATED LIFETIME	80 000 hours

1.1.3. Luminaire data

IP RATING	IP65
BEAM ANGLES	155° X 85°
DIMMABILITY	Optional
MOUNTING POSITION	Side entry – slip over Ø50mm Horizontal
MOUNTING HIGHT	4 – 12M

1.1.4. Luminaire physical characteristics

SERIES 5							
	25W	36W	50W	75W	100W	150W	200W
A (mm)	175	175	175	175	175	175	175
B (mm)	120	170	200	280	350	500	700
C (mm)	100	100	100	100	100	100	100
Weight (kg)	1.9	2.1	2.4	2.8	3	3.8	4.5
MAX project ed Area (m ²)	0.021	0.031	0.035	0.049	0.061	0.087	0.123



1.2. INSTALLATION INSTRUCTION

1.2.1. Part number break down.

Part no. example. ST-200-S6-N-S-P1

LUMINAIRE DESCRIPTION	WATTAGE	SERIES	CCT-COLOUR TEMPERATURE	LENS	MOUNTING TYPE
ST - Streetlight	25W, 36W 50W, 75W 100W, 150W 200W	S6 - SERIES 6	W - 3000K - warm white N - 4000K - Neutral white C - 5000K - Cool white	S - 155° X 85°	P1 - Spigot Ø=50mm

1.2.2. Diagrams/drawings

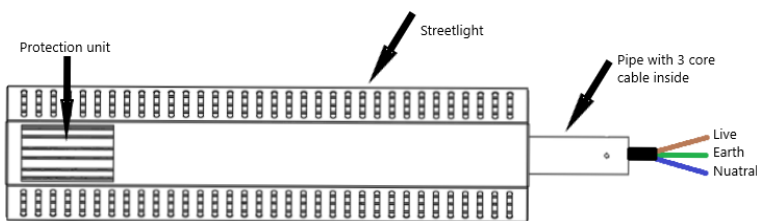


Figure 1 Back of streetlight

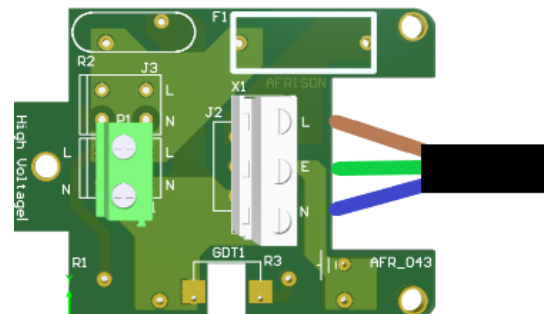


Figure 2 Protection unit diagram

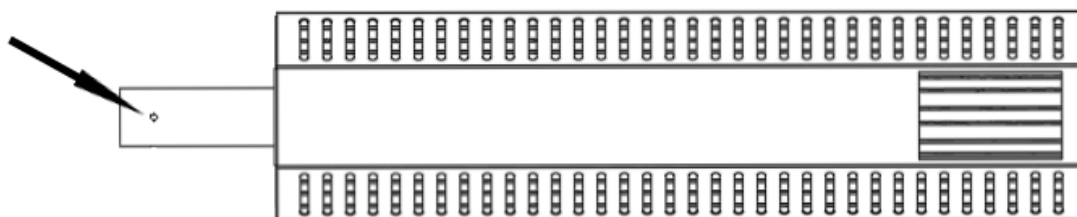
1.2.3. Installation instructions

The Installation must be carried out by a Qualified Electrician in compliance with the local code of practice.

Tools required:

3mm Allen hex key – tool not included.

- Step 1. To install the Majuba street light special attention needs to be given to the way of mounting on the spigot with the 4 6mm Allen grub screws (torque settings 11N.m).



- Step 2. To connect to the mains 220VAC confirm main power is switched off.
- Step 3. The Majuba streetlight requires mains Voltage of between 200 to 240VAC 50Hz. Connect the mains cable at the pipe outlet of the light to the termination inside the pole spigot. Connect the corresponding wires, Brown (L), Blue (N), and Yellow/Green (E) to the termination inside the pole spigot. Always read the label on the Protection Unit to make sure the Voltage is correct. When powering the light, the light should come on immediately.