



TECHNICAL  
INSTALLATION  
MERU

APPROVAL

	NAME	SIGNATURE	POSITION	DATE
PREPARED BY:				
REVIEWERD BY:				
APPROVED BY:				

1.1. TECHNICAL INFORMATION

1.1.1. Power data

RATED POWER	25 – 150W
INPUT VOLTAGE RANGE	200 – 240 VAC 50/60Hz
INPUT TYPE (AC/DC)	AC – Alternating current
CONNECTED POWER	22 – 145W
POWER FACTOR	>0.9

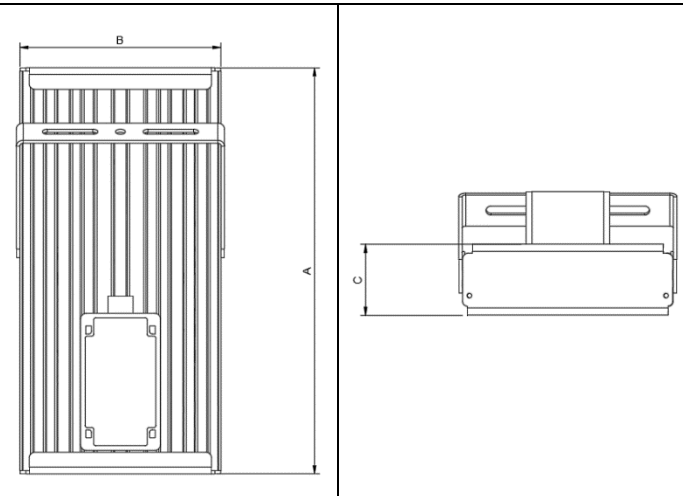
1.1.2. LED data

LED BARND	CREE®, Luxeon® or Osram®
CCT	3000 – 5000 Kelvin
CRI	≥80
LED RATED LIFETIME	80 000 hours

1.1.3. Luminaire data

IP RATING	IP65
BEAM ANGLES	155° X 85°
DIMMABILITY	Optional
MOUNTING POSITION	Universal

1.1.4. Luminaire physical characteristics

Product description Wattage and sizes						
	25W	50W	75W	100W	150W	
A (mm)	120	200	280	350	500	
B (mm)	175	175	175	175	175	
C (mm)	100	100	100	100	100	
Weight (kg)	1.6	2.4	3	3.4	3.8	
MAX projected Area (m)	0.033	0.055	0.077	0.079	0.113	

## 1.2. INSTALLATION INSTRUCTION

### 1.2.1. Part number break down.

Part no. example. FL-100-S6-C-S-U-1

LUMINAIRE DESCRIPTION	WATTAGE	SERIES	CCT-COLOUR TEMPERATURE	LENS	MOUNTING TYPE	NUMBER OF BANKS
FL - Flood light	25W 50W 75W 100W 150W	S6 - SERIES 6	W - 3000K - warm white N - 4000K - Neutral white C - 5000K - Cool white	S - 155° X 85°	U - U-bracket	1

### 1.2.2. Diagrams/drawings

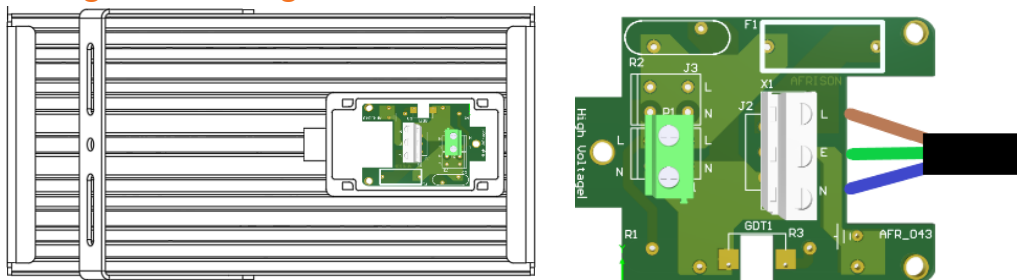


Figure 1 Protection unit



Figure 2 U-Bracket mounting holes.

### 1.2.3. Installation instructions

The Installation must be carried out by a Qualified Electrician in compliance with the local code of practice.

**Tools required:**

Flathead screwdriver 5.5mm (to open connection box)

13mm spanner (to adjust U-Bracket)

Dependent on fasteners that will be used the tools may vary.

- Step 1. To install Meru flood Lights special attention needs to be given to the mounting holes on the U bracket for alignment.
- Use correct size (calculated on height and weight) Bolts/Rawl bolts to correspond with your mounting surface.
- Once u bracket adjusted to required angle fasten u bracket bolts. (M8 – 25N.m)
- Step 2. To connect to the mains 220VAC confirm main power is switched off.
- Step 3. Meru flood lights require mains Voltage of between 200 to 240VAC 50 Hz. Connect the mains cable to the Protection unit via the 20mm Cable Gland. Always use round cable and not Flex or flat cables for sealing purposes with the Cable Gland. Open the Protection unit by unscrewing the 4 screws that keep the lid closed. Connect the corresponding wires, Brown (L), Blue (N), and Yellow/Green (E) in the connector on the PC board. Always read the label on the Protection Unit to make sure the Voltage is correct. When powering the light, the light should come on immediately.